



SPECIFICATIONS

EBTZ-42440-4ER/DAC-4R

- TYPE:** ----- 15 Character Alphanumeric in (**RED-ER, GREEN-EG, YELLOW-EY and BLUE-EB**)
- DISPLAY:** ----- 4-DIGIT, 7 seg. LED and 15 LINE 5 by 7 DOT- MATRIX LED
- CHARACTER HEIGHT:** ----- 4" (101.6 mm) Hr / Min and 1.2" 15 CHARACTER location display and 10 CHARACTER DATE
- VISIBILITY:** ----- 150 Ft. (45.72 METERS)
- POWER REQUIREMENTS:** -- 100-240vac 50/60Hz (**SWITCHING TRANSFORMER**)
- FRAME:** ----- ALUMINUM (BLACK ANODIZED FINISH)
- DIMENSIONS:** ----- 13.25" x 67.25" x 1.38"
- WEIGHT:** ----- 23.5 lbs.
- OPERATING TEMP.:** ----- -17° TO 190° F
- HUMIDITY:** ----- 0% TO 95% NON-CONDENSING
- OPERATING MODE:** ----- **PC OPERATION USB RS485, ZONE SELECTABLE, AUTOMATIC DAY LIGHT**



NEW 1 SEC A YEAR ACCURATE (TCXO) STANDARD



#24awg or larger
twisted pair
SIGNAL CABLE
Category 2 UPT- type

15ft



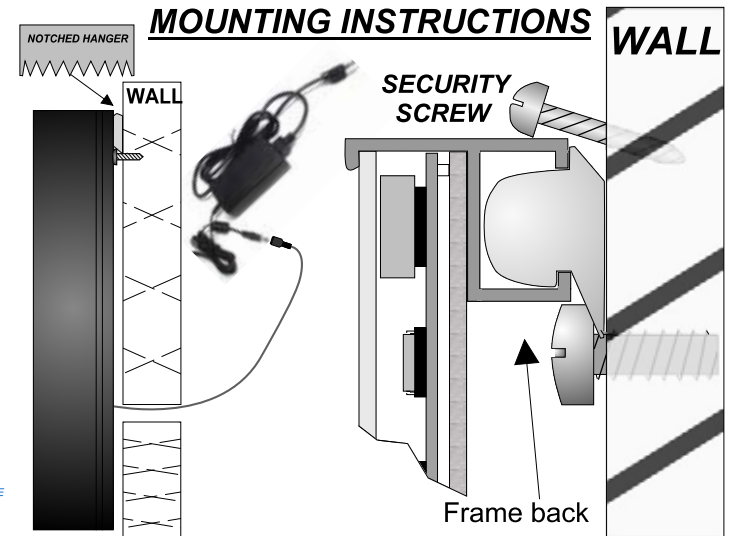
CUSTOMERS PC

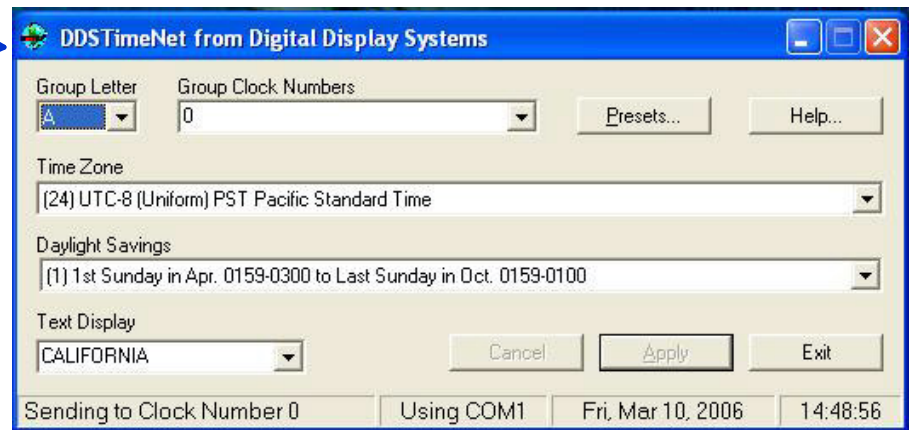
USB

RS-485
UP TO
7,000ft

(-) SIDE
WHITE / BLUE
WHITE / ORANGE
WHITE / GREEN

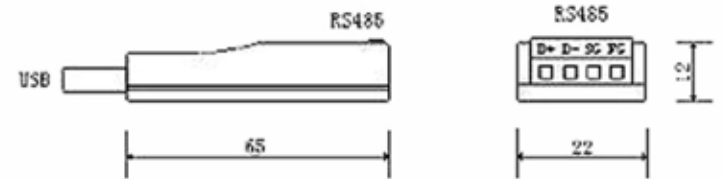
(+) SIDE
BLUE / WHITE
ORANGE / WHITE
GREEN / WHITE





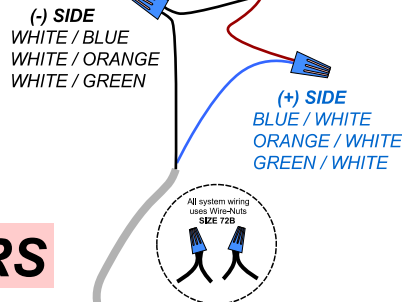
WHEN ON THE PC THE PC TIME IS UP DATING THE TIME ON THE TIME ZONE CLOCK. WHEN THE TIME ZONE IS OFF THE PC THE MASTER ZONE (0) IS UPDATING THE TIME ZONES.

RS-485 UP TO 7,000ft



**ENTECH SIGNS
1-800-383-8163
WWW.ALPHA-LED.COM**

GROUP CLOCK NUMBERS



RS485 wiring instruction		
Signal	Wiring	
D+	RS485 signal +	BLUE/ORANGE/GREEN
D-	RS485 signal -	W-BLUE/W-ORANGE/W-GREEN
SG	RS485 ground	NC
FG	Connect to the ground	NC

